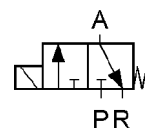


Closed when de-energised (NC)

Ports	Orifice [mm]	Kv value (water at 1 bar) [l/min]	Differential pressure [bar]		Valve body	Mass [kg]	Coil type	Model	Order code 230VAC NBR seal	Fig.
			Min	Max AC*						
G1/8	1	0.5	0	10	Ms	0.15	TM25	D305	330611	1
	1.2	0.75	0	10	Ms	0.15	TM25	D305	330614	1
	1.5	0.95	0	7	Ms	0.15	TM25	D305	330616	1
FL22	1	0.5	0	10	Ms	0.15	TM25	D305	330618	2
G1/8	1.8	1.5	0	10	Ms	0.35	TM30	D310	330513	3
G1/4	1.4	0.85	0	16	Ms	0.35	TM30	D320	330510	3
	1.8	1.5	0	10	Ms	0.35	TM30	D321	330511	3
	2.3	1.9	0	15	Ms	0.52	TM35	D384	330710	3
FL32	1.5	0.95	0	12	Ms	0.23	TM30	D381	330518	4A
	1.5	0.95	0	12	Ms	0.23	TM30	D383	330514	4B
2xG1/8	1.8	1.5	0	10	Al	0.45	TM30	D500	330480	5
3xG1/8	1.8	1.5	0	10	Al	0.68	TM30	D500	330486	5
4xG1/8	1.8	1.5	0	10	Al	0.9	TM30	D500	330487	5
5xG1/8	1.8	1.5	0	10	Al	1.13	TM30	D500	330488	5
G3/4	25	90	0	0.2	Ms	2.3	TM40	D327	331746	6



*Pressure is lower when DC coil is used!

ORDERING:

Please state order code, seal material and voltage (e.g.: 330611 EPDM 24VAC) or consult our staff.

For easier valve choice use QUESTIONNAIRE on page 36.

OPTIONS:

- EEx me II explosionproof coils
- stainless steel valve body
- NPT ports

Other versions on request.

Specifications are subject to change without notice.

TECHNICAL DATA:

Internal parts:	stainless steel
Seals:	NBR, EPDM, FPM, PTFE
Fluid temperature:	-10°C to +90°C (NBR) -10°C to +130°C (FPM, PTFE) max +130°C (EPDM)
Ambient temperature:	max +55°C
Viscosity:	max 21 mm ² /s
Response time:	10 to 20 ms
Voltages:	230, 115, 48, 24 V 50/60 Hz 24, 12 V DC
Power consumption:	see chapter »Coils«
Duty cycle:	continuous (ED100%)
Cycling rate:	max 1000 cpm
Electrical protection:	IP65 (with plug to DIN 43650)

