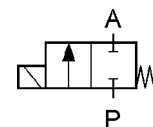
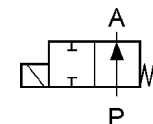


Closed when de-energised (NC)

Ports	Orifice size [mm]	Kv value (water at 1 bar) [l/min]	Differential pressure [bar]		Valve body	Seal	Mass [kg]	Coil type	Model	Order code 230VAC	Fig.
			Min	Max AC*							
G3/8	4	5.9	0	2	PTFE	FPM	0.54	TM35	DL4	339003	1
	6	14	0	0.4	PP	FPM	0.27	TM30	DL6	339004	2
	6	14	0	2.5	PP	FPM	0.38	TM35	DL6	339002	2
Ø16	6	14	0	0.4	PP	FPM	0.27	TM30	DL6c	339020	3
G3/8	11	38	0	0.15	PP	FPM	0.27	TM30	DL11	339025	2
Ø16	11	38	0	0.15	PP	FPM	0.27	TM30	DL11c	339035	3
G1/2	10	20	0	1.8	PP	EPDM	0.45	TM35	DL10	339830	5
	10	20	0	1.8	PP	FPM	0.45	TM35	DL10	339820	5
G1/2	8	15	0	1	PP	EPDM	0.47	TM35	D249	312710	4
	8	15	0	1	PP	FPM	0.47	TM35	D249	312711	4


Open when de-energised (NO)

G3/8	6	14	0	0.4	PP	FPM	0.43	TM35	DL6NO	339680	2
	11	38	0	0.15	PP	FPM	0.43	TM35	DL11NO	339708	2



*Pressure is lower when DC coil is used!

ORDERING:

Please state order code and voltage (e.g.: 339003 24VAC) or consult our staff.

For easier valve choice use QUESTIONNAIRE on page 36.

OPTIONS:

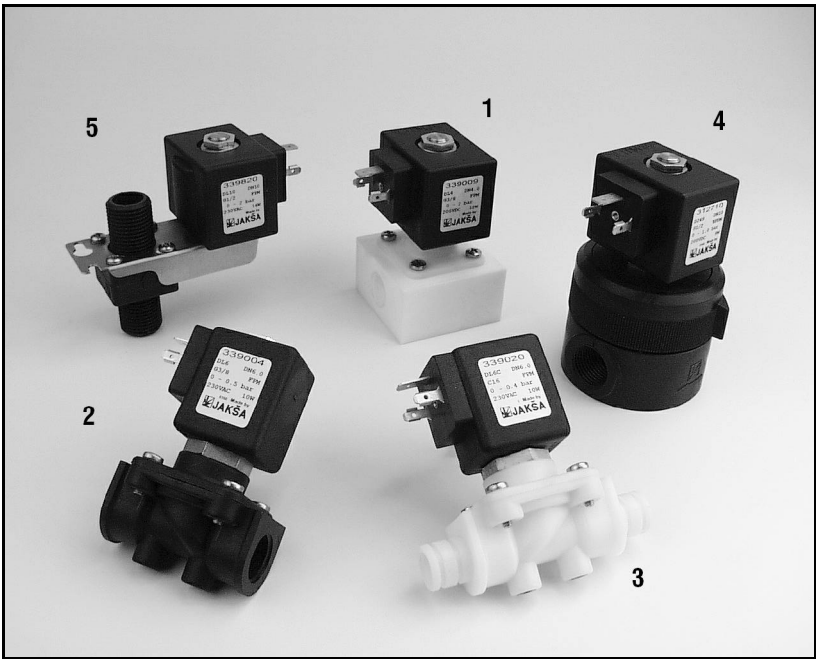
- EEx me II explosionproof coils

Other versions on request.

Specifications are subject to change without notice.

TECHNICAL DATA:

Internal parts: not in contact with fluid
 Seals: NBR, EPDM, FPM
 Fluids: aggressive
 Fluid temperature: -10°C to +95°C
 Ambient temperature: max +55°C
 Viscosity: max 21 mm²/s
 Response time: 10 to 20 ms
 Voltages: 230, 115, 48, 24 V 50/60 Hz
 24, 12 V DC
 Power consumption: see chapter »Coils«
 Duty cycle: continuous (ED100%)
 Cycling rate: 10 to 100 cpm
 Electrical protection: IP65 (with plug to DIN 43650)



Dimensions [mm]

